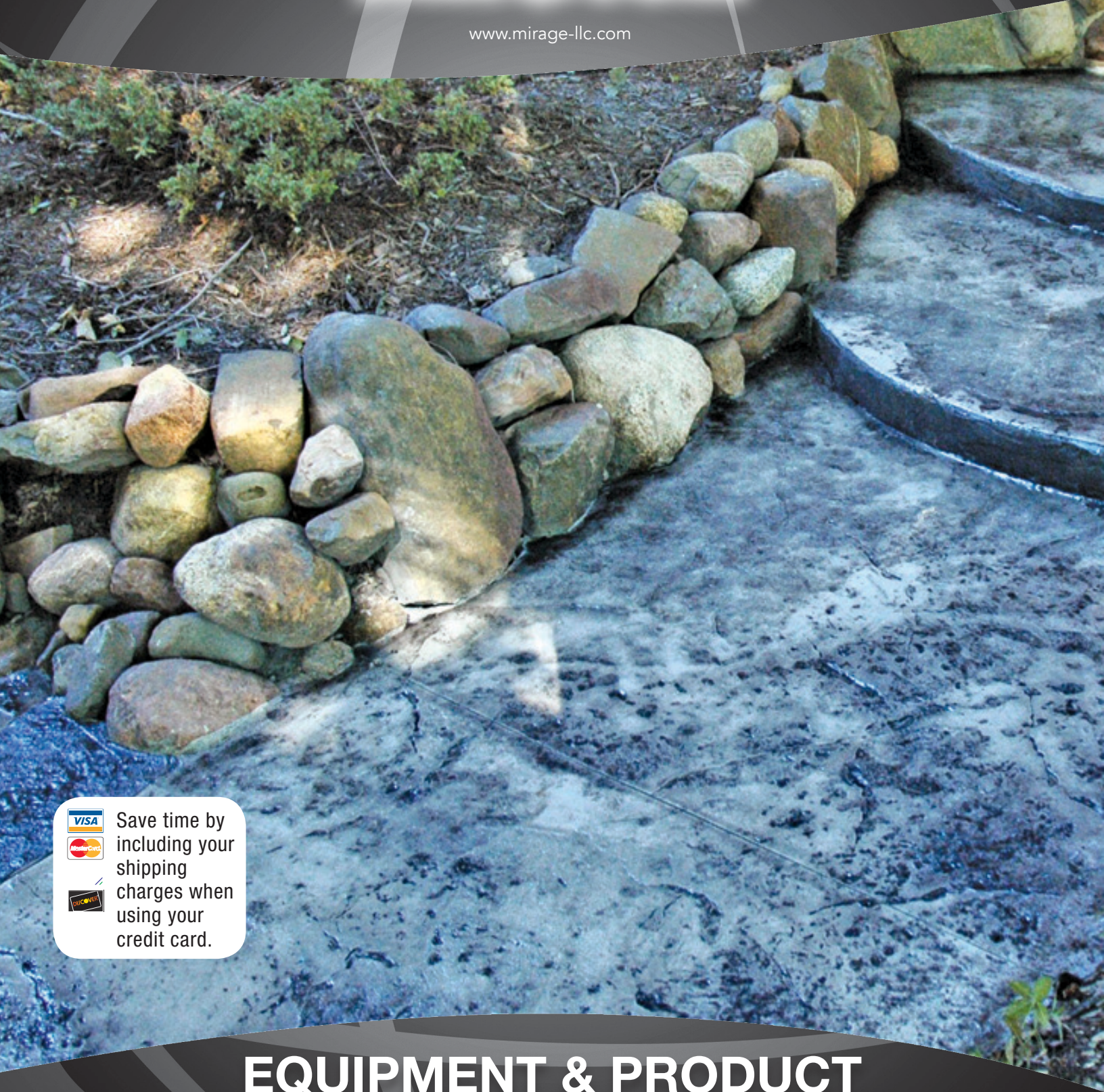




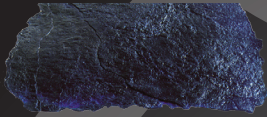
[www.mirage-llc.com](http://www.mirage-llc.com)



 Save time by including your shipping charges when using your credit card.  
  


# EQUIPMENT & PRODUCT CATALOG

# STAMPING SETS



**ITEM NO.**

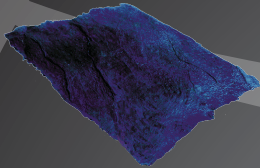
RD-134 60" x 60"

**DESCRIPTION**

Texture Stone

**PRICE**

\$425.00



\*All texture tools are approximate in size

# SEALERS

ITEM NO.	DESCRIPTION	COVERAGE	PRICE
RD-603	ULTRA-SHEEN 6000 HIGH GLOSS	1,500 SQ FT (.20 CENTS/SQ. FT)	\$219.95/PAIL
RD-607	ULTRA-SHEEN 1000 MED GLOSS	1,500 SQ FT (.20 CENTS/SQ. FT)	\$249.95/PAIL
<i>AIM / VOC SEALERS MUST BE USED IN THE FOLLOWING STATE: ME-NH-VT-RI-CT-MA-NY-NJ-PA-DE-MD-VA-WV-OH-MI-IN-WI-IL</i>			
RD-606	ULTRA-SHEEN 7000 AIM/VOC HIGH GLOSS	1,500 SQ FT (.20 CENTS/SQ. FT)	\$219.95/PAIL



[www.mirage-llc.com](http://www.mirage-llc.com)

## PRE-BLENDED COLOR MATERIAL

ITEM NO.	DESCRIPTION	COVERAGE	PRICE
RD-302	MIRAGE TEXTURE MATERIAL BEIGE	Approx. 20 sq.ft.	\$43.95
RD-302-A	MIRAGE TEXTURE MATERIAL SILVER	Approx. 20 sq.ft.	\$43.95
RD-320	DARK GRAY TEXTURE MATERIAL	Approx. 20 sq.ft.	\$43.95
RD-321	DARK BROWN TEXTURE MATERIAL	Approx. 20 sq.ft.	\$43.95
RD-303	MIRAGE TEXTURE WHITE MATERIAL	Approx. 20 sq.ft.	\$43.95
RD-304	MIRAGE TEXTURE GRAY MATERIAL	Approx. 20 sq.ft.	\$43.95

## CONSUMABLE ITEMS

ITEM NO.	DESCRIPTION	COVERAGE	PRICE
RD-301	MIRAGE PRIMER	1000 SQ. FT	\$169.95
RD-306	MIRAGE PATCH/LEVELING MATERIAL	50 LBS	\$43.95
RD-307	MIRAGE CLEAR LIQUID RELEASE	1,000 SQ. FT	\$169.95
RD-314	MIRAGE SURFACE RETARDER	FIVE GAL.	\$99.95
RD-317	MIRAGE 50' ROLL FORMING MATERIAL		\$19.95
RD-319	COMMERCIAL POOL GRIP 32OZ.	ONE PER 5 GALLON SEALER	\$59.95
RD-319-A	POOL GRIP		\$39.95
RD-320	CLEANER, ETCHER & DEGREASER	5 GALLON PAIL	\$99.95
RD-700	STRIPPER	1 GALLON PAIL	\$99.95
RD-700-A	STRIPPER	5 GALLON PAIL	\$329.95

## ANTIQUING COLORED POWDER RELEASE AGENTS

ITEM NO.	COLOR	SIZE	PRICE
RD-R-509	CHARCOAL	28 LB. PAIL	\$89.95
RD-R-510	MEDIUM GRAY	28 LB. PAIL	\$89.95

*Please note: You must mix your dry release powder with your liquid release using an electric drill with mixing paddle. Add the amount desired--this could be 1 to 2 cups per 5-gallon pail. Be sure to write down your own formula. Use a 2 to 3 gallon pump sprayer and shake sprayer often while applying. You must keep tip clean at all times as the powder tends to plug the sprayer, which is the downside of using dry powder release agent. Following that, in order to highlight properly, you must use a mild acid solution with an acid brush keeping the surface WET at all times. This application takes two men.*



# PURE DRY INTEGRAL PIGMENTS

ITEM NO.	COLOR	PRICE
RD-IP-1207	BLACK	\$49.95
RD-IP-1208	MED-GRAY	\$49.95

*Please note: You should always first mix your pure integral pigments with 50% of the water you are using for your mix. Use your cone mixer and mix until thoroughly blended. Then gradually add white mix. You should keep track of your formula as some might add 1/8 cup while some might only add 4-5 tablespoons. This is strictly all by choice.*

## PATINA STAIN SYSTEM *ETCHING STAINS*

ITEM NO.	COLOR	COVERAGE	SIZE	PRICE
SES-34F	Onyx Black	1,000 sq. ft. (92.9m <sup>2</sup> )	5 gal. (18.9 Ltr.)	\$199.95
SES-35F	English Amber	1,000 sq. ft. (92.9m <sup>2</sup> )	5 gal. (18.9 Ltr.)	\$199.95
SES-36F	Coffee Brown	1,000 sq. ft. (92.9m <sup>2</sup> )	5 gal. (18.9 Ltr.)	\$199.95
SES-38F	Mocha	1,000 sq. ft. (92.9m <sup>2</sup> )	5 gal. (18.9 Ltr.)	\$199.95



**\*\*\* Patina Stains are semi-transparent. They react differently with all cement based surfaces which will create a different color and appearance on every job. Test areas are always highly suggested due to this matter.**





[www.mirage-llc.com](http://www.mirage-llc.com)



[www.mirage-llc.com](http://www.mirage-llc.com)

# RE-DO-IT RE-SURFACING SYSTEM

ITEM NO	DESCRIPTION	COVERAGE	PRICE
RD-321	RE-DO-IT WHITE	120 SQ . FT	\$44.95 Pail
RD-322	RE-DO-IT GRAY	120 SQ . FT	\$44.95 Pail

*The Re-do-it system can be installed using a magic trowel, sprayer, regular trowel or roller. You must clean and prep area then apply two coats of primer. Re-Do-It system is only around 1/8" in thickness and you can color the gray mix as well as the white with integral colors of your choice. Always mix the integral color into the water first then add the dry powder and mix well.*



[www.mirage-llc.com](http://www.mirage-llc.com)

# EQUIPMENT ACCESSORIES



ITEM NO.	DESCRIPTION	PRICE
RD-200	GAUGE RAKE	\$149.95
RD-201	22" MAGIC TROWEL	\$79.95
RD-203	CONE MIXER	\$149.95
RD-204	MIXING PADDLE	\$59.95
RD-211	WATER DEVICE PAIL	\$21.95
RD-212	4" DIAMOND BLADE	\$49.95
RD-214	HIGHLIGHT BRUSH	\$24.95
RD-215	ROLLER TOOL	\$69.95



[www.mirage-llc.com](http://www.mirage-llc.com)

Re-Do-It, LLC. 325 Commerce Blvd., Liverpool, NY 13088  
 email: [info@mirage-llc.com](mailto:info@mirage-llc.com) Ph: 855-767-4055 Ph: 315-451-4124 [www.mirage-llc.com](http://www.mirage-llc.com)